



Friends of the Farm Show News



March-April 2024

Volume 12 Issue 1

**Erica Teagarden
2024 PA Fair Queen**

**Mike Waugh Celebrity
Feed Scurry Recap**

**PA Friends of Farm
Show Foundation Inc.
EXPO-tainment**

**Penn State Law
Webinar**



**Friends of the PA
Farm Show**

**William L. Piper,
Chairman
Carlisle, PA**

**Michael H. Firestine
Vice-Chairman
Womelsdorf, PA**

**Larry Weaver
Treasurer
New Holland, PA**

**Mark Keller
Secretary
Elliottsburg, PA**

**Lizzie Bailey
New Cumberland, PA**

**Galen Kopp
Mount Joy, PA**

**Lela Reichart
New Oxford, PA**

**Nathan Tallman
Kempston, PA**

**Vicki Varner
McAllisterville, PA**

**Gerald Reichard
Special Advisor
Waynesboro, PA**

**Deborah Trump
Recording Secretary**

**Russell Redding
Secretary
PA Department of
Agriculture**

**Gregory Hostetter
Executive Deputy
Secretary
PA Department of
Agriculture**

**Lisa Graybeal
Deputy Secretary
PA Department of
Agriculture**

The Friends of the Pennsylvania Farm Show Foundation is a 501(c)(3) non-profit that was developed to stimulate, facilitate, and support educational programs, incentives, and events relating to the annual Farm Show event.



Happy New Year!

The Friends of the Farm Show Foundation, Inc.
thanks you for attending the
2024 PA Farm Show!

We hope you enjoyed this year's event
which was packed full of educational, fun,
and family oriented events to immerse yourself
in every aspect of agriculture!

We look forward to seeing you January 4-11, 2025!

We are looking for articles and pictures to
publish in the Friends of the Farm Show
News.

May-June: Due by April 1st

July-Aug: Due by June 1st

Sept-Oct: Due by August 1st

Newsletter Editor: Lizzie Bailey

Questions? Please call (717)254-9550

Email articles: fofsnewsletter@gmail.com

May-June
Newsletter
Deadline
is
April 1st

Erica Teagarden, Washington County Fair, was crowned as the 2024 PA Fair Queen on Saturday, January 20th, at the 111th PA State Association of County Fairs & Pennsylvania Showmen's Association Convention that was held in Hershey, Pa.
Photo credit: Tim McGowen Studios.

Foundation Contact Information

Email: farmshowfriends@gmail.com. **Website:** www.friendsoffarmshow.com

Like us on Facebook: FriendsofPAFarmShow

Insta: friendsofpafarmshow **Twitter:** @FriendsofFS



Mike Waugh Celebrity Feed Scurry Recap

Jan. 9, 2024 - Equine Arena - 6 p.m.



Photos by Rachel Schlegel

The sponsors, drivers and muckers gathered for a group photo prior to the start of the event.

The Mike Waugh Celebrity Feed Scurry is a significant fundraising event for the Foundation. This year, the scurry was split into two heats with 16 teams running in each heat, the largest group to date.

The evening kicked-off with a beautiful rendition of "The Star Spangled Banner" sung by Rep. Eddie Day Pashinski who serves Luzerne County. Following the National Anthem, Eric Thomas led the group around the arena, giving them a layout of the course.

The excitement in the Equine Area escalated as the local celebrities and their muckers took their spots. As the races began, each team tried to secure that top spot!

Those in attendance were able to support the children's stick horse race during intermission. A special thank you to the State Troopers who made this time special for the children and attendees alike.

The event was a night to remember with the help of so many volunteers!



Above: Eric Thomas interviews Rep. Dawn Keefer who serves York County prior to the race beginning.

Left: Taking first place this year was Rep. Abigail Salisbury who represents Allegheny County. She secured her win with a time of 1.1170. Rep. Salisbury is pictured with Foundation Special Advisor Gerry Reichard.



During intermission, a stick horse race was held. Winners in each age group include (in no specific order): Gia Lemelle, Konrad Zook, Ethan Ruddy, Bryce Fry and Avi Green.



Executive Deputy Secretary Gregory Hostetter along with Foundation Chairman William Piper kick-off the evening.



All drivers got instructions prior to the start of their race.

Thank you, to all the sponsors, drivers, muckers, teamsters and volunteers that made this event a success.

A special thank you is extended to Eric Thomas, the emcee of the evening!

Shapiro Administration Invests \$5.8 Million to Protect 1,519 Acres on 22 Pennsylvania Farms from Future Development

Farms Protected in Adams, Centre, Cumberland, Lancaster, Lebanon, Lehigh, Luzerne, Northampton, Schuylkill, Union, York counties

Harrisburg, PA – The Shapiro Administration announced today that Pennsylvania preserved 1,519 acres on 22 farms in 11 counties, forever protecting them from residential or commercial development. The development rights approved for purchase today by the State Land Preservation Board represent a more than \$5.8 million investment in ensuring that Pennsylvania farmers will have prime farmland to feed our families and economy in the future.

“In the simplest terms, without farms we don’t eat,” Agriculture Secretary Russell Redding said. “Pennsylvania has some of the richest soil in the nation and is situated near ports, railways, interstate highways, and 40 percent of the nation’s population – the very people we need to feed. Protecting those economic opportunities and irreplaceable resources for our farmers is one of the most important investments we make as a state.”

Pennsylvania leads the nation in preserved farmland. Since 1988, when voters overwhelmingly supported creation of the Farmland Preservation Program, Pennsylvania has protected 6,336 farms and 634,375 acres in 58 counties from future development, investing more than \$1.69 billion in state, county, and local funds.

Pennsylvania partners with county, and sometimes local government and nonprofits to purchase development rights, ensuring a strong future for farming and food security. By selling their land’s development rights, farm owners ensure that their farms will remain farms and never be sold to developers.

Notable among farms preserved this month, two Schuylkill County farms will trigger additional investment of federal dollars through the U.S. Department of Agriculture’s Regional Conservation Partnership Program (RCPP). The farms are along the Kittatinny Ridge, an area rich in farmland and forested land, critical not just for producing food, but for providing wildlife habitat and improving the health of the Chesapeake Bay, and with it, the water supply of the mid-Atlantic region. These dollars will be used for preserving farms whose owners have applied for easements but were placed on a waiting list until funds became available.

Also notable, the Frey farm in Adams County was preserved using funds donated to the county by Tim Brown, a neighboring farmer in Mt. Joy township. Prior to his death, Brown, a former chair of the Adams County Land Preservation Board, left more than \$500,000 to the county to be used to preserve farmland surrounding his farm.

“Farm families who sell their land development rights are leaving a legacy that will ensure that future Pennsylvania families have green spaces and healthy farmland to produce food, income, and jobs,” Sec. Redding said. “Tim Brown was passionate about that legacy. He embodied the care of the environment and his neighbors that defines so many Pennsylvania farmers. The Shapiro Administration is proud to continue supporting that legacy and partnering with federal, county, and local government to sustain our future together.”

Farms preserved today and dollars invested, by county:

Adams County – Total investment – \$123,589; \$3,594 – state, \$119,995 county
Paula K. Frey, Mt. Joy Township, 46-acre crop farm

Centre County – Total investment – \$445,999; \$223,798 state, \$4,357 county, \$217,844 township
Joanne M. Fisher, Halfmoon Township, 117-acre crop and livestock farm

Cumberland County – Total investment – \$148,529 state only
Ronald L. and Judy P. Deihl, Lower Frankford Township, 83-acre crop and livestock farm

Lancaster County – Total investment – \$679,548; \$42,099 – state, \$470,414 – county, \$88,550 township
Christopher D. and Lois A. Hoover, East Drumore Township, 42-acre crop and livestock farm
Stevie G. and Susie L. King, West Lampeter Township, 47-acre dairy farm
Kerry L. Meyer, Penn Township, 56-acre crop farm
Daniel S. and Barbara G. Smucker, Caernarvon Township, 39-acre dairy farm

Lebanon County – Total investment – \$201,781; \$144,944 – state, \$56,837 county
Kathleen S. Eisenhouer, Linda S. Johnson, Glen R. Hess, North Annville Township, 79-acre crop farm

Lehigh County – Total investment – \$1,645,867; \$220,018 – state, \$1,425,848 – county
William G. and Cheryl C. Ash and Brian Brady, Heidelberg Township, horse farm
Weinhofer Farms LLC, Whitehall Township, 154-acre crop farm
Errol W. and Virginia A. Zellner, Brenda Kay and Robert Price, Washington Township, 28-acre crop farm

Luzerne County – Total investment – \$210,415, state only
Burger’s Farm LLC, Butler Township, 59-acre crop farm

Northampton County – Total investment – \$552,772, state only
Jody L. and Megan M. Snyder, Lehigh Township, 33-acre crop farm
Weinhofer Farms LLC #3, East Allen Township, 16-acre crop farm

Schuylkill County – Total investment – \$608,850; \$543,850 – state, \$65,000 – county
Baron and Robin Heatherington #2, Union Township, 50-acre crop farm
William K. Stump #1, Wayne Township, 157-acre crop farm
Carl H. and Edith E. Wehry and Carl J. Wehry #1, Barry Township, 84-acre crop and livestock farm

Union County – Total investment – \$212,755; \$109,652 – state, \$103,104 – county
Ralph M. and Lexie C. Reish, Buffalo Township, 69-acre crop and livestock farm

York County – Total investment – \$1,009,547; \$21,180 – state, \$988,367 – county
Lynn D. and Tammie M. Godfrey #1, Springfield Township, 127-acre crop farm
Kevin D. and Robin D. Grim #1, Paradise Township, 108-acre crop farm
Larry W. and Lisa Kenton #1, Washington Township, 28-acre crop farm
Stephen J. and Dolores E. Krick #1, Lower Chanceford Township, 72-acre horse farm

These purchases continue to multiply Pennsylvania dollars invested in conservation initiatives, including the \$154 million Agricultural Conservation Assistance Program, supporting farmers’ efforts to reduce water pollution and improve soil quality, along with Clean & Green tax incentives, Resource Enhancement and Protection dollars, and other conservation funding. Pennsylvania’s Farmland Preservation Program also secured a \$7.85 million federal grant from USDA’s Regional Conservation Partnership Program to support climate-smart conservation on preserved Pennsylvania farms, an investment that will not only improve conservation efforts, but help measure their impact.

To learn more about
Pennsylvania’s Farmland
Preservation Program and
investments in a secure,
sustainable future for
Pennsylvania agriculture,
visit agriculture.pa.gov.

Thank You, PCN for your coverage of the 108th PA Farm Show!

PCNTV celebrated its 30th year of covering the Farm Show!



Plan ahead and
sign-up for PCNTV at
<https://pcntv.com/>



Brynn MacDonald and Crystal Kimball with PCN, take a picture with Secretary of Agriculture Russell Redding on the last day of the Farm Show.



Punxsutawney Phil along with the Inner Circle meet and greet. Pictured with Phil are, Tom Dunkle and Butch Philliber.



Photos submitted by PCNTV
Weather World meet and greet with Jon Nese, Marisa Ferger, and Rob Lydick.



The **FFA Mid-Winter Convention** was held Monday, Jan. 8 in the New Holland Arena during the 108th PA Farm Show. With a filled arena, the energy level matched the excitement not only on the floor but in the stands.

FFA is, and continues to be, a program the Friends of the PA Farm Show Foundation is honored to support.

Congratulations to all of those who wear the blue & gold!

FFA Mid-Winter Convention was proudly sponsored by:



.970
first-year
member
jackets

.504
state
degrees

.2
new charters



Pennsylvania Department of
Agriculture

As spring wild bird migration nears, poultry owners are reminded to protect their flocks, and their neighbors' flocks, along with the Commonwealth's economy, against Highly Pathogenic #AvianInfluenza (HPAI) by remaining vigilant and reviewing and implementing strong biosecurity plans and practices.

🐔 Strengthen your biosecurity plan: <http://bit.ly/3WOMTC0>

FARM SHOW FRIDAY

TRIVIA

Test your
Farm Show
knowledge
each Friday
on    !



DO YOU KNOW:

1. What was the name of the first calf born in the Calving Corner?
Bonus: what day and time was it born?
2. How many individual horses and chariot seats does the circa 1947 Merry-Go-Round have that is located in the Main Hall?
3. What livestock department prohibits exhibitors from using coloring agents on the animals they exhibit?

3. Beef Cattle. Officials may use a white glove or white towel test to monitor this prohibition.

2. 30 horses & 2 chariot seats

1. Snowflake was born on January 7 at 12:07 p.m.!

Answers:

Washington County Teen to Reign as 2024 Pennsylvania Fair Queen

Washington County Agricultural Fair Queen Erica Teagarden of Washington County was crowned the 2024 Pennsylvania Fair Queen on Saturday, January 20 at the 111th annual convention of the Pennsylvania State Association of County Fairs and Pennsylvania State Showmen's Association.

Teagarden was one of 58 contestants who were evaluated by a panel of three judges on their written and speaking skills, knowledge of the fair and agricultural industries, and their poise and personal presentation in business attire.

Erica is the 19-year-old daughter of Chad and Bobbie Jo Teagarden. She is a 2022 graduate of McGuffey High School where she was involved in the McGuffey FFA Chapter, National Honor Society, and girls' varsity soccer. Currently she is a sophomore at Penn State studying Agricultural and Extension Education. She is also involved in Ag Advocates, Teach Ag Avengers, the Beta Sisterhood, PSU FFA Alumni and Supporters Chapter, and the Dairy Science Club. Erica has also served three years as a Pennsylvania Farm Show Junior Committee Member. After graduating she plans to pursue a career as a high school agricultural educator.

Albion Area Fair Queen Elise Honeycutt, 16, of Erie County was selected as the 2024 Alternate. The daughter of Anthony and Mary Beth Honeycutt, Elise is currently a junior at Northwestern High School where she is the Albion FFA Chapter reporter and previously served on the Chapter's Junior Officer Team. She is also an active member of her 4-H Club, Beefers Plus, where she served as the vice president. She has a passion for showing lambs and working at her grandparents' Christmas tree farm, Rick Walker Farms. In her



Erica Teagarden, representing the Washington County Fair was crowned as the 2024 PA Fair Queen. on Saturday, January 20th at the 111 PA State Association of County Fairs & the PA Showmens' Association Convention held in Hershey, PA. Photo credit: Tim McGowen Studios.

spare time, Elise raises and trains service dogs for New Hope Assistance Dogs.

The other top five finalists were Butler Fair Queen Kendyl Steighner, Juniata County Fair Queen Kera Bentz, and Southern Lancaster County Fair Queen Keeley Kreider.

Torrence Brown, from Cumberland County, representing the Cumberland Ag Expo, was chosen as Miss Congeniality by her fellow contestants.

"Our fairs wouldn't be what they are without the youth that take on the role of being ambassadors for their fairs," said Agriculture Secretary Russell Redding. "While each contestant represented a different fair, they all came together to represent our shared Agriculture industry. It is such an honor to see how our youth are able to grow as leaders through

opportunities such as the State Fair Queen competition."

Each of the 58 contestants prepared a brief speech highlighting why people should come to her county or community fair and wrote an essay about the fair's significance in her local community. They were each interviewed by the panel of three judges and gave a stage introduction during the PA Fairs' annual banquet. The top five finalists were chosen and gave impromptu answers on how they would market a new fair event to encourage more youth participation. Teagarden answered that she would expand on her school visits as the Washington County Agricultural Fair queen. "One way I hope to encourage more youth participation overall is by going into schools and classrooms, talking to the kids," said Teagarden. "It is so impactful to be one of those people that goes into the classroom, especially when you're wearing a big shiny crown on your head...they pay attention to you!"

Erica and Elise will receive scholarships from the Pennsylvania State Association of County Fairs at the end of their reigns in January 2025. Outgoing Alternate Sarah Rehmyer crowned them from the York State Fair and the 2023 PA Fair Queen Chloe Bomgardner from the Lebanon Area Fair.

The 2024 Queen and Alternate will travel the state this year representing Pennsylvania's rich agricultural heritage and serving as an ambassador for the fair association.

If you would like to request the PA Fair Queen to your event, please contact Bryndil Kemler, Events Coordinator at (570)594-4742. Email: brynk03@gmail.com

Agritourism and On-Farm Markets & Events: Planning for Your Success in 2024

Come learn from industry professionals about planning for on-farm sales, events, and agritourism success in 2024! This half day webinar will cover topics including; operational and legal considerations, necessary research before launching, marketing and pricing, and value proposition considerations for your business.

According to the National Ag Law Center, on-farm events and agritourism is a field that is growing in popularity as producers try to diversify and increase profits. By combining agriculture and tourism, agritourism offers new sources of revenue, but also presents potential problems and legal complications to agritourism operators. Agritourism ranges from small operations that function on a seasonal basis and offer limited consumer services to large operations that operate throughout the year and provide numerous consumer services.

Topics covered in this seminar will include:

- Operational Considerations for On-Farm Markets or Events
- Legal Considerations for Agritourism Operations
- Essential Research Before Launching Agritourism Activities
- Marketing & Pricing for Agritourism
- Value Proposition Planning for Agritourism Operations

Information covered will be applicable to operations such as:

- Pumpkin picking patches
- Corn mazes or hay rides
- U-Pick operations or cut-your-own farms
- Petting and feeding zoos
- Dude ranches
- Demonstration farms
- Agricultural museums or living history farms
- On-farm farmers' markets
- Winery tours and wine tasting
- Rural bed & breakfasts
- Garden tours



Small Business Development Centers
Helping businesses start, grow, and prosper.

When: Wednesday, March 6, 2024 from 8:30 a.m. –1:00 p.m. ET

Where: Online

Cost: Free!

Registration:

<https://pasbdc.ecenterdirect.com/events/31230>

Speakers;

Brian Moyer - Penn State Extension Education Program Associate, Business and Community Vitality

Jackie Schweichler - Penn State Agriculture and Shale Law Staff Attorney

Claudia Schmidt - Penn State Extension Assistant Professor of Marketing and Local/Regional Food Systems

Sarah Cornelisse - Penn State Extension Senior Extension Associate, Dept. of Agricultural Economics, Sociology and Education

Winifred McGee - PA Small Business Development Centers Ag Center of Excellence Business Consultant

For more information on webinars contact:

Kara M. Riccioni, MBA, MS, PAS
Director of Agricultural Business Development
Pennsylvania Small Business Development Centers
Email: riccioni@kutztown.edu
Phone: (484)646-4183

PA Preferred Junior Baking Highlights

There were 77 PA Preferred cookies, brownies, bars entries yesterday, which was impressive considering the Nor'Easter weather that was happening. 1st Place - Franklin County Fair: Kamea Pierce - age 16, resides in Franklin County, Won \$500 and a Blue Rosette. 2nd Place - Hollidaysburg Community Farm Show, Aidan Dull - age 16, resides in Blair County and Won \$250 and a Red Rosette, 3rd Place - Washington County Agricultural Fair, Lexi Fox - age 12, resides in Washington County, Won \$100 and a White Rosette, 4th Place - Centre County Grange Fair, Reese Patterson - age 14, resides in Centre County, Won a Yellow Rosette, 5th Place - West Lampeter Community Fair, Cameron Zook - age 17, resides in Lancaster County, Won a Green Rosette.



PA Preferred photos submitted

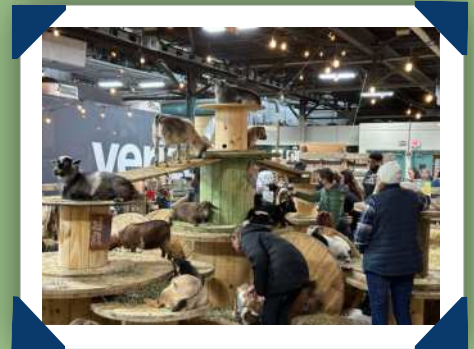
Family Living Exhibits



Family Living Photos by Rachel Schlegel

Sports America Promotions, Wish Upon A Butterfly, and Steinmetz Family Farm partnered with the Friends of the Farm Show Foundation to bring you a variety of educational and hands-on experiences. A portion of the proceeds from these exhibits will benefit the Foundation and their mission to support funding the future of agriculture.

Steinmetz Family Farm Baby Goat Snuggling



Fishin with Friends - Sports America Promotions



Wish Upon A Butterfly

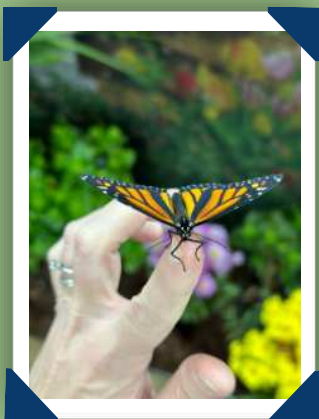


Photo Credit: Rachel Schlegel

DAIRY PRODUCERS AND FARM EMPLOYEES INVITED TO ANIMAL CARE WORKSHOPS

The Free Workshops will be held on Four Dairy Farms Across the State this April



CENTER FOR
DairyEXCELLENCE



The Center for Dairy Excellence

is a non-profit organization initiated by the Pennsylvania Department of Agriculture in 2004. Bringing together people from more than 40 different dairy organizations in Pennsylvania, the Center's mission is to enhance the profitability of the dairy industry by empowering people, creating partnerships, and increasing the availability and use of resources. Learn more at centerfordairyexcellence.org.

Professional Dairy Managers of Pennsylvania (PDMP)

is a not-for-profit, farmer-driven organization advancing the State's dairy industry through improved productivity and economic viability with continued stewardship of our animals, environment, and community. Programs offered by PDMP are designed by dairy producers for dairy producers. For more information on PDMP, visit their website at pdmp.org.

The Pennsylvania Beef Council

is a non-profit organization working on behalf of nearly 18,000 beef, dairy and veal producers in the Commonwealth. The Beef Council administers the Beef Checkoff Program assesses \$1 per head on the sale of live domestic and imported cattle, in addition to a comparable assessment on imported beef and beef products. Checkoff revenues may be used for promotion, education and research programs to improve the marketing climate for beef.

many Harrisburg, Pa. – Dairy producers and their employees are invited to one of four animal care workshops that are being held on dairy farms across the state this April. Hosted by the Center for Dairy Excellence, PA Beef Council and the Professional Dairy Managers of Pennsylvania (PDMP), the free workshops will focus on hands-on skill-building to help dairy producers meet National FARM compliance. A certificate will be provided at the conclusion of each workshop to show dairy producers' commitment to the National FARM and animal care.

A Spanish interpreter will be present at each event, making the workshops ideal for both English and Spanish-speaking employees. Lunch will be provided at each workshop as well.

"Thanks to the large number of dairy farm teams who have attended these animal care workshops over the last two years, we look forward to partnering with PDMP and the PA Beef Council to offer another series this spring. These workshops qualify as National FARM training, so they are a great opportunity to boost your skills in key animal welfare areas and develop safe and effective protocols for your operation," said Allen Hess, Customer Relations Specialist at the Center for Dairy Excellence.

Four workshops will be held on dairy farms across Pennsylvania throughout April. The events will be held on the following dates:

- Tuesday, April 2 from 9 a.m. to 3 p.m. – Canon Dairy, Mercer County, PA
- Tuesday, April 9 from 9 a.m. to 3 p.m. – Dry Creek Farm, Blair County, PA
- Tuesday, April 16 from 9 a.m. to 3 p.m. – Dotterer Dairy, Clinton County, PA
- Tuesday, April 23 from 9 a.m. to 3 p.m. – Zahncroft Dairy, Berks County, PA

During each workshop, attendees will rotate through multiple stations and gain training in several key animal welfare areas, including calf care, lameness and locomotion, euthanasia, and fitness to transport, stockmanship, and more. "Last year, I sent our farm's main animal handling employees to this workshop focused on training for the FARM program or Farmers Assuring Responsible Management. They thanked me for sending them. They came back knowing more about biosecurity, animal welfare and handling, and lots of on-farm activities," said Amy Brickner of Stover Farms in Cumberland County, Pa.

To register for one of the free animal care workshops, call 717-346-0849 or visit: www.centerfordairyexcellence.org/animal-care. Please include the names of employees who will be attending your operation.

Sponsorship opportunities are also available. For more information about the events, contact Allen Hess at ahess@centerfordairyexcellence.org or call 717-346-0849.

The National Dairy FARM Program: Farmers Assuring Responsible Management works to set the highest standards when it comes to animal care, workplace settings, and environmental and antibiotic stewardship. These workshops qualify as National FARM training for dairy producers and employees.



On Tuesday, April 16, 2024, from 12 noon–1:00 ET, the Penn State Center for Agricultural and Shale Law will conduct the latest installment with its Quarterly Dairy Legal Webinar series. Each quarter's free one-hour webinar covers the legal and regulatory developments in the U.S. dairy industry from the preceding quarter, as well as including an in-depth look at a single focus topic of law, regulation, or government policy of interest to dairy professionals of all kinds.

This quarter's focus topic is "An Overview of U.S. State Milk Pricing Systems"

One-hour of substantive CLE credit is available for Pennsylvania-licensed attorneys at no charge.

Learn more about the Quarterly Dairy Legal Webinar Series:

<https://aglaw.psu.edu/quarterly-dairy-legal-webinar/>

Questions?

Email Audry Thompson: aet17@psu.edu

ACRE Law 101:

Agriculture, Local Regulations, & Nutrient Management

Wednesday, March 6, 2024, 9:00 a.m.– 1:00 p.m.

In-person at the US Hotel Tavern, Hollidaysburg, PA

To register, call or email Beth Futrick:

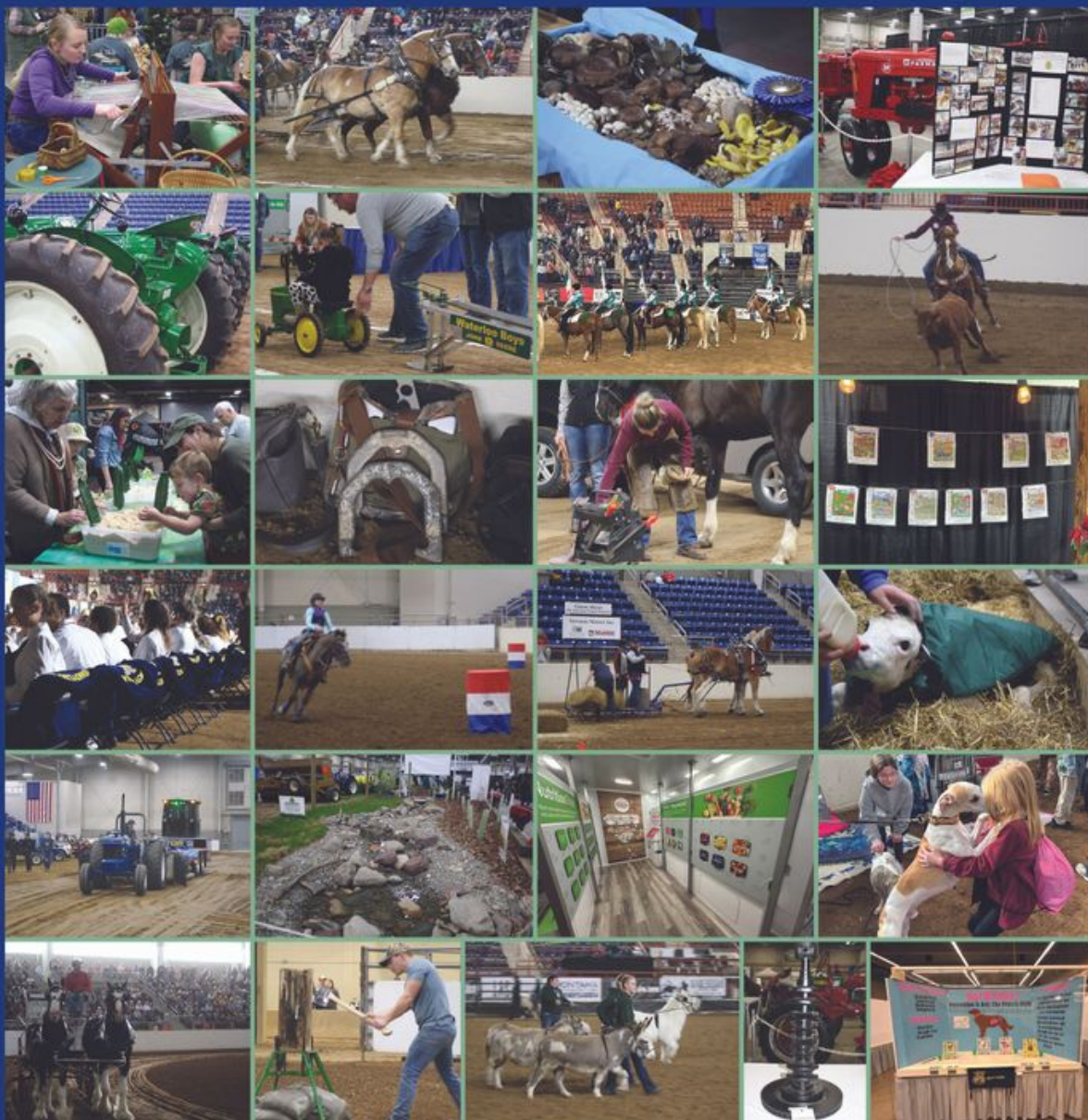
814-696-0877, ext. 3329

bfutrick@blairconservationdistrict.org

The Foundation was proud to support the following events during Farm Show:

- Sheep to Shawl & Fleece to Shawl
- Draft Horse Pulling Competition
- AgExplorer Stations
- Antique Tractor Restoration
- Horse Power!
- Children's Pedal Tractor Pull
- Cumberland 4-H Drill Team
- PA High School Rodeo
- Family Living Stage
- Horseshoe Pitching
- Horse Shoeing & Sheep Shearing Demo
- Coloring Contest
- FFA Mid-Winter Convention
- Speedhorse Demonstration
- Mike Waugh Celebrity Draft Horse Feed Scurry Competition
- Calving Corner
- Truck and Tractor Pull Demonstration
- Conservation Display
- PA Farms to Families Immersion Lab
- Canine Extravaganza – Meet the Breeds
- Draft Horse Hitch & Drive Demo's
- Lumberjack Demonstration
- Mini Horse Extravaganza
- Ag Mechanics
- FFA Window Displays

If you would like to help us secure the continued financial support of educational events and programs at the Farm Show, become a Friend. **Annual dues are \$65 and Lifetime dues are \$500.** Applications can be found at <https://bit.ly/3sz7mS9-Friend> or by scanning the code.





FRIENDS OF THE
PENNSYLVANIA
FARM SHOW
FOUNDATION, INC.

Friends of Farm Show *Funding the Future of Ag*

About us: The Foundation exists in order to **stimulate**, **facilitate** and **support** educational programs, incentives and events relating to the annual Pennsylvania Farm Show.

We invite you to partner with us to produce this truly stellar event.

Participation at all levels is welcome. Becoming a Farm Show Friend is open to any person or family. Organizations, businesses and individuals are welcome to explore varied sponsorship levels.

Sign-Up for our Newsletter • Become a Friend • Stay Connected



Board Members

William L. Piper, Chairman

Michael H. Firestine, Vice-Chairman

Mark Keller, Secretary

Larry Weaver, Treasurer

Elizabeth Bailey, Member

Galen R. Kopp, Member

Lela Reichart, Member

Nathan Tallman, Member

Vicki Varner, Member

Contact Information:

Gerry Reichard, Special Advisor

farmshowfriends@gmail.com

717-729-7158

"The **Trust** that our **Annual Friends** and our **Lifetime Friends** has placed in the hands of our 9-member Board of Directors of our Foundation is staggering in fulfillment of our **Mission Statement! What a Success Story!**"

-William L. Piper, Chairman

www.friendsoffarmshow.com



FRIENDS OF THE
PENNSYLVANIA
FARM SHOW
FOUNDATION, INC.

Friends of Farm Show

Funding the Future of Ag

Stimulate ♦ Facilitate ♦ Support

The Foundation believes in its mission statement to contribute to educational programs, incentives and events relating to the annual Pennsylvania Farm Show.

Why is the Foundation important?

The Foundation was established in August 2010 and since then it has contributed more than \$1.8 million to the educational programs at the Farm Show.

How can you get involved?

Become a Friend!

\$65/annually ♦ \$500/lifetime

Email farmshowfriends@gmail.com
or call 717-729-7158

Donate to the Friends

Along with the fee of becoming a Friend, donations of any amount are accepted and are tax deductible.

FRIENDSHIP APPLICATION:

Business Name: _____

Contact Person: _____

Address: _____

City: _____ **State:** _____ **Zip:** _____

Email: _____

Phone: _____

Sponsorship Level: _____

Logo Trademark: _____

Donation : \$ _____

\$65/Annual ☐ \$500/Lifetime ☐

☐ Check enclosed

☐ I would like more information about the Foundation

Please make your check payable to:

Friends of the
Pennsylvania Farm Show Foundation, Inc.

Mail to:

Friends of the
Pennsylvania Farm Show Foundation, Inc.
2300 North Cameron Street
Harrisburg, PA 17110

FOLLOW US!

[FriendsofPAFarmShow](#) [friendsofpafarmshow](#) [FriendsofFS](#)



c/o PA Farm Show Complex & Expo Center,
2300 North Cameron Street
Harrisburg, PA 17110

Email: farmshowfriends@gmail.com

Website: www.friendsoffarmshow.com

Like us on Facebook: [FriendsofPAFarmShow](https://www.facebook.com/FriendsofPAFarmShow)

Insta: [friendsofpafarmshow](https://www.instagram.com/friendsofpafarmshow)

Twitter: [@FriendsofFS](https://twitter.com/FriendsofFS)

Visit the PA Farm Show Website for upcoming events!
<https://tinyurl.com/5y3a85dw>



 **Is Hiring!**
apply at:
employment.pa.gov

Pennsylvania Farm Show Complex and Expo Center Schedule

Highlights of Upcoming Events

Feb. 29-March 3, 2024	Horse World Expo PA Home & Garden Show
March 14-15, 2024	Keystone Nationals 2024 Garden Tractor Pull
March 23-24, 2024	Harrisburg Gun Show 2024

To see the full schedule

